

NunoErin improves lives and communities by facilitating creative sensory spaces that support health, happiness, and well-being.

Sparkle products provide mesmerizing interactive light experiences that create a soothing and inclusive atmosphere with universal appeal.



Sparkle Sensory Cube

- SKU: SPSC-ECO-18
- Size: 17.75 in x 17.75 in x 16.5 in
- Size: 445 mm x 445 mm x 419 mm
- Weight: 20 lbs / 9 kg
- 16 LEDs and Sensors
- Power cord exits base



Sparkle Sensory Bench

- SKU: SPSB-ECO-47
- Size: 47 in x 18 in x 16.5 in
- Size: 1194 mm x 457 mm x 419 mm
- Weight: 46 lbs / 20.8 kg
- 48 LEDs and Sensors
- Power cord exits base
- Optional Bench Bracket Kit (*ordered separately*)

UNIQUE FEATURES

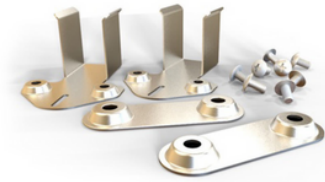
- **Universal Appeal:** The pleasing tactile interaction is universally appealing.
- **Rich Variety:** Experience a broad array of changing colors and interactive light behaviors.
- **Sensory Stimulation:** Bio-responsive light effects offer soothing sensory stimulation.
- **Mood Enhancing:** Modulating light creates a mood-boosting atmosphere and fosters well-being.
- **Multi-User:** Easily engage and entertain multiple users at once.
- **Inclusive Design:** Provides intuitive sensory play to foster an inclusive environment.
- **Premium Quality:** Premium capacitive sensors and full-spectrum LED deliver long-term quality.
- **Recycled Material:** The exterior form is made from recycled translucent white polyethylene.
- **Light & Rugged:** The lightweight, durable design is perfect for commercial or residential spaces.

HASSLE FREE

- Plug and play installation.
- Quick and easy to clean and sanitize.
- Lightweight and easy to move.
- 2-year warranty.
- No monthly subscriptions.
- Quick and friendly support.

The Sparkle Sensory Benches can be connected to one another in different configuration or anchored to the floor with optional stainless steel brackets.

Bench Bracket Kit includes 2 deluxe brackets, 2 straight brackets and 8 mounting screws.



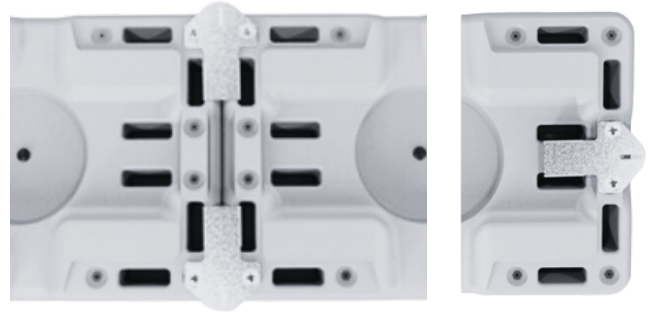
Bench Bracket Kit

- SKU: ANSB-ECO-2

BENCH BRACKET KIT

Floor Connection

To connect a Sparkle Sensor Bench to the floor, use deluxe bracket as shown. Position the bracket so the head faces outward and exposes anchoring slot. Add your own anchoring fasteners based on your floor type. Remove rubber legs from the benches to the exposed bracket is flush with the ground.



Inline Connection

To connect two Sparkle Sensory Benches inline, use one deluxe bracket and one straight bracket as shown.



90 Degree Connection

To connect two Sparkle Sensory Benches at a 90 degree angle, use one deluxe bracket as shown.



CREATIVE SENSORY PLAY



SUPPORTING BUSINESSES SERVING FAMILIES

- Hospitals and clinics
- Sensory rooms
- Family restaurants
- Therapy centers
- Schools and daycare
- Indoor playgrounds
- Family entertainment centers
- Shopping centers and airports

